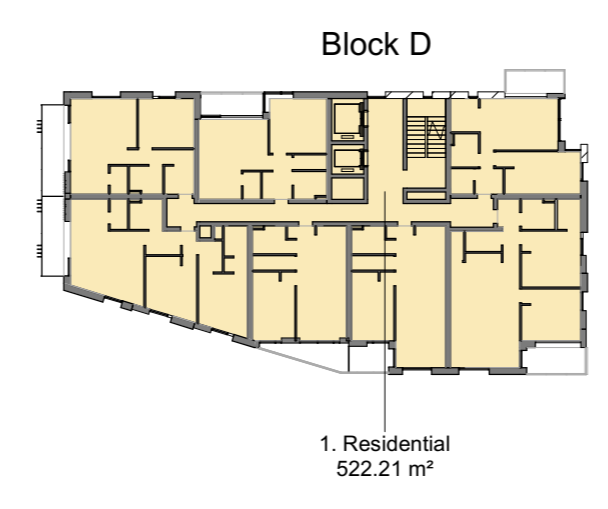


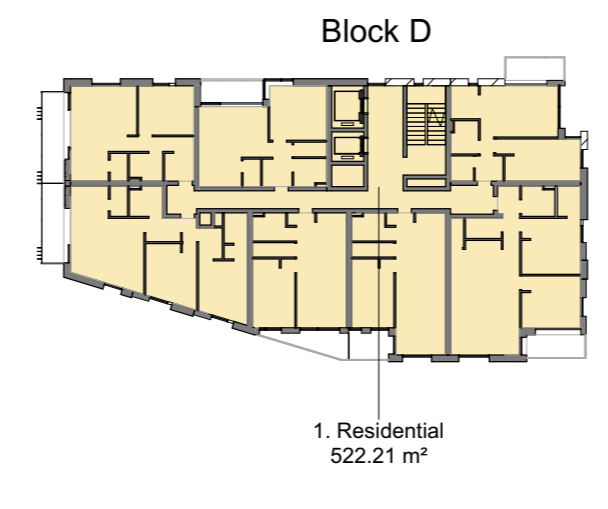
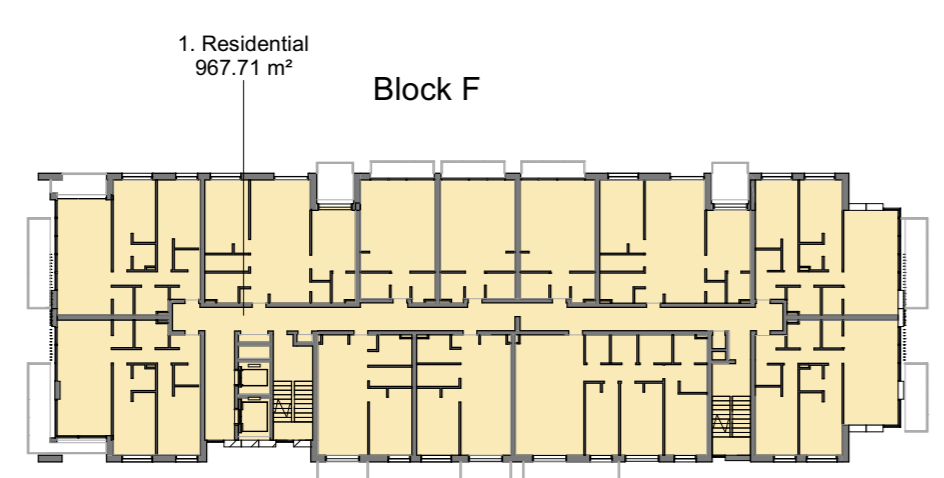
GFA 0 ALL AREAS

wt	Area	Level	Name
Block A	200.6 m ²	01 - BOULEVARD - GRD. FLOOR	1. Residential
Block A	343.6 m ²	01 - BOULEVARD - GRD. FLOOR	1. Residential
Block A	88.0 m ²	01 - BOULEVARD - GRD. FLOOR	1. Residential
Block B	658.4 m ²	01 - BOULEVARD - GRD. FLOOR	1. Residential
Block C	289.6 m ²	01 - BOULEVARD - GRD. FLOOR	1. Residential
Block D	53.4 m ²	01 - BOULEVARD - GRD. FLOOR	1. Residential
Block E	421.1 m ²	01 - BOULEVARD - GRD. FLOOR	1. Residential
Block F	1102.2 m ²	01 - BOULEVARD - GRD. FLOOR	1. Residential
Block A	1123.7 m ²	02 SECOND FLOOR	1. Residential
Block B	624.6 m ²	02 SECOND FLOOR	1. Residential
Block C	600.2 m ²	02 SECOND FLOOR	1. Residential
Block D	387.7 m ²	02 SECOND FLOOR	1. Residential
Block E	366.2 m ²	02 SECOND FLOOR	1. Residential
Block F	1017.4 m ²	02 SECOND FLOOR	1. Residential
Block A	1261.1 m ²	03 - THIRD FLOOR	1. Residential
Block B	663.7 m ²	03 - THIRD FLOOR	1. Residential
Block C	600.2 m ²	03 - THIRD FLOOR	1. Residential
Block D	525.4 m ²	03 - THIRD FLOOR	1. Residential
Block E	428.0 m ²	03 - THIRD FLOOR	1. Residential
Block F	971.1 m ²	03 - THIRD FLOOR	1. Residential
Block A	1261.1 m ²	04 - FOURTH FLOOR	1. Residential
Block B	663.7 m ²	04 - FOURTH FLOOR	1. Residential
Block C	600.2 m ²	04 - FOURTH FLOOR	1. Residential
Block D	525.4 m ²	04 - FOURTH FLOOR	1. Residential
Block E	426.6 m ²	04 - FOURTH FLOOR	1. Residential
Block F	967.6 m ²	04 - FOURTH FLOOR	1. Residential
Block A	1261.1 m ²	05 - FIFTH FLOOR	1. Residential
Block B	663.7 m ²	05 - FIFTH FLOOR	1. Residential
Block C	600.2 m ²	05 - FIFTH FLOOR	1. Residential
Block D	525.4 m ²	05 - FIFTH FLOOR	1. Residential
Block E	426.1 m ²	05 - FIFTH FLOOR	1. Residential
Block F	971.7 m ²	05 - FIFTH FLOOR	1. Residential
Block A	1261.1 m ²	06 - SIXTH FLOOR	1. Residential
Block B	663.7 m ²	06 - SIXTH FLOOR	1. Residential
Block C	600.2 m ²	06 - SIXTH FLOOR	1. Residential
Block D	522.2 m ²	06 - SIXTH FLOOR	1. Residential
Block E	429.7 m ²	06 - SIXTH FLOOR	1. Residential
Block F	971.7 m ²	06 - SIXTH FLOOR	1. Residential
Block A	1261.1 m ²	07 - SEVENTH FLOOR	1. Residential
Block B	665.6 m ²	07 - SEVENTH FLOOR	1. Residential
Block C	600.2 m ²	07 - SEVENTH FLOOR	1. Residential
Block D	522.2 m ²	07 - SEVENTH FLOOR	1. Residential
Block E	426.5 m ²	07 - SEVENTH FLOOR	1. Residential
Block F	966.8 m ²	07 - SEVENTH FLOOR	1. Residential
Block A	1261.1 m ²	08 - EIGHTH FLOOR	1. Residential
Block B	663.7 m ²	08 - EIGHTH FLOOR	1. Residential
Block C	600.2 m ²	08 - EIGHTH FLOOR	1. Residential
Block D	522.2 m ²	08 - EIGHTH FLOOR	1. Residential
Block E	426.1 m ²	08 - EIGHTH FLOOR	1. Residential
Block F	971.7 m ²	08 - EIGHTH FLOOR	1. Residential
Block A	1261.1 m ²	09 - NINTH FLOOR	1. Residential
Block B	663.7 m ²	09 - NINTH FLOOR	1. Residential
Block C	600.2 m ²	09 - NINTH FLOOR	1. Residential
Block D	522.2 m ²	09 - NINTH FLOOR	1. Residential
Block E	430.5 m ²	09 - NINTH FLOOR	1. Residential
Block F	971.7 m ²	09 - NINTH FLOOR	1. Residential
Block A	1261.1 m ²	10 - TENTH FLOOR	1. Residential
Block B	663.7 m ²	10 - TENTH FLOOR	1. Residential
Block C	600.2 m ²	10 - TENTH FLOOR	1. Residential
Block D	522.2 m ²	10 - TENTH FLOOR	1. Residential
Block E	425.0 m ²	10 - TENTH FLOOR	1. Residential
Block F	966.9 m ²	10 - TENTH FLOOR	1. Residential
Block A	1261.1 m ²	11 - ELEVENTH FLOOR	1. Residential
Block B	663.7 m ²	11 - ELEVENTH FLOOR	1. Residential
Block C	600.2 m ²	11 - ELEVENTH FLOOR	1. Residential
Block D	522.2 m ²	11 - ELEVENTH FLOOR	1. Residential
Block E	426.1 m ²	11 - ELEVENTH FLOOR	1. Residential
Block F	971.4 m ²	11 - ELEVENTH FLOOR	1. Residential
Block A	1261.1 m ²	12 - TWELFTH FLOOR	1. Residential
Block B	663.7 m ²	12 - TWELFTH FLOOR	1. Residential
Block C	600.2 m ²	12 - TWELFTH FLOOR	1. Residential
Block D	522.2 m ²	12 - TWELFTH FLOOR	1. Residential
Block E	426.1 m ²	12 - TWELFTH FLOOR	1. Residential
Block F	967.7 m ²	12 - TWELFTH FLOOR	1. Residential
Block A	1261.1 m ²	13 - THIRTEENTH FLOOR	1. Residential
Block B	663.7 m ²	13 - THIRTEENTH FLOOR	1. Residential
Block C	600.2 m ²	13 - THIRTEENTH FLOOR	1. Residential
Block D	522.2 m ²	13 - THIRTEENTH FLOOR	1. Residential
Block E	426.1 m ²	13 - THIRTEENTH FLOOR	1. Residential
Block F	967.7 m ²	13 - THIRTEENTH FLOOR	1. Residential
Block A	1261.1 m ²	14 - FOURTEENTH FLOOR	1. Residential
Block B	663.7 m ²	14 - FOURTEENTH FLOOR	1. Residential
Block C	600.2 m ²	14 - FOURTEENTH FLOOR	1. Residential
Block D	522.2 m ²	14 - FOURTEENTH FLOOR	1. Residential
Block E	426.1 m ²	14 - FOURTEENTH FLOOR	1. Residential
Block F	967.7 m ²	14 - FOURTEENTH FLOOR	1. Residential
Block A	1261.1 m ²	15 - FIFTEENTH FLOOR	1. Residential
Block B	663.7 m ²	15 - FIFTEENTH FLOOR	1. Residential
Block C	600.2 m ²	15 - FIFTEENTH FLOOR	1. Residential
Block D	522.2 m ²	15 - FIFTEENTH FLOOR	1. Residential
Block E	426.1 m ²	15 - FIFTEENTH FLOOR	1. Residential
Block F	967.7 m ²	15 - FIFTEENTH FLOOR	1. Residential
1. Residential: 66	45936.7 m ²		
Block C	309.8 m ²	00 - LOWER GROUND	2. Communal Facilities
Block D	88.8 m ²	00 - LOWER GROUND	2. Communal Facilities
Block A	303.9 m ²	01 - BOULEVARD - GRD. FLOOR	2. Communal Facilities
Block D	126.1 m ²	01 - BOULEVARD - GRD. FLOOR	2. Communal Facilities
Block A	110.2 m ²	02 SECOND FLOOR	2. Communal Facilities
Block D	153.6 m ²	17 - SEVENTEENTH FLOOR	2. Communal Facilities
2. Communal Facilities: 6	1095.0 m ²		
Block D	25.5 m ²	00 - LOWER GROUND	3. Resident Support
Block D	159.7 m ²	00 - LOWER GROUND	3. Resident Support
3. Resident Support: 2	185.2 m ²		
Block C	20.5 m ²	00 - LOWER GROUND	4. Creche
Block C	333.8 m ²	01 - BOULEVARD - GRD. FLOOR	4. Creche
4. Creche: 2	354.3 m ²		
Block D	21.6 m ²	00 - LOWER GROUND	5. Café
Block D	119.6 m ²	01 - BOULEVARD - GRD. FLOOR	5. Café
5. Café: 2	141.2 m ²		
Block A	113.8 m ²	00 - LOWER GROUND	6. Plant
Block B	50.7 m ²	00 - LOWER GROUND	6. Plant
Block C	84.6 m ²	00 - LOWER GROUND	6. Plant
Block D	170.0 m ²	00 - LOWER GROUND	6. Plant
Block F	135.6 m ²	00 - LOWER GROUND	6. Plant
Block F	34.2 m ²	00 - LOWER GROUND	6. Plant
Tanks	48.6 m ²	00 - LOWER GROUND	6. Plant
Block A	115.4 m ²	01 - BOULEVARD - GRD. FLOOR	6. Plant
Block C	17.0 m ²	01 - BOULEVARD - GRD. FLOOR	6. Plant
6. Plant: 9	770.1 m ²		
Block B	88.0 m ²	00 - LOWER GROUND	7. Waste store
Block C	83.8 m ²	00 - LOWER GROUND	7. Waste store
Block F	114.5 m ²	00 - LOWER GROUND	7. Waste store
Block A	18.6 m ²	01 - BOULEVARD - GRD. FLOOR	7. Waste store
7. Waste store: 4	304.9 m ²		
Block A	66.3 m ²	00 - LOWER GROUND	8. Ancillary
Block B	64.5 m ²	00 - LOWER GROUND	8. Ancillary
Block C	55.7 m ²	00 - LOWER GROUND	8. Ancillary
Block D	114.1 m ²	00 - LOWER GROUND	8. Ancillary
Block E	57.5 m ²	00 - LOWER GROUND	8. Ancillary
Block F	84.1 m ²	00 - LOWER GROUND	8. Ancillary
Block D	46.9 m ²	01 - BOULEVARD - GRD. FLOOR	8. Ancillary
Block D	65.3 m ²	17 - SEVENTEENTH FLOOR	8. Ancillary
8. Ancillary: 8	554.3 m ²		
Common	6790.5 m ²	00 - LOWER GROUND	9. Carpark
Block A	1297.6 m ²	01 - BOULEVARD - GRD. FLOOR	9. Carpark
9. Carpark: 2	8088.1 m ²		
Block A	1501.5 m ²	00 - LOWER GROUND	9b. Carpark
9b. Carpark: 1	1501.5 m ²		
Grand total	58931.3 m ²		

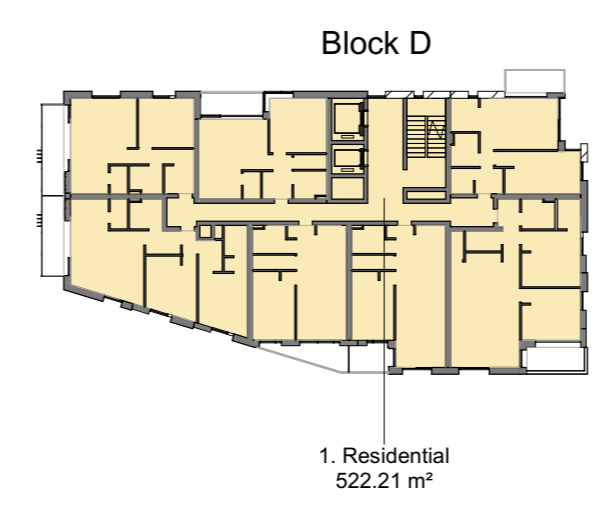
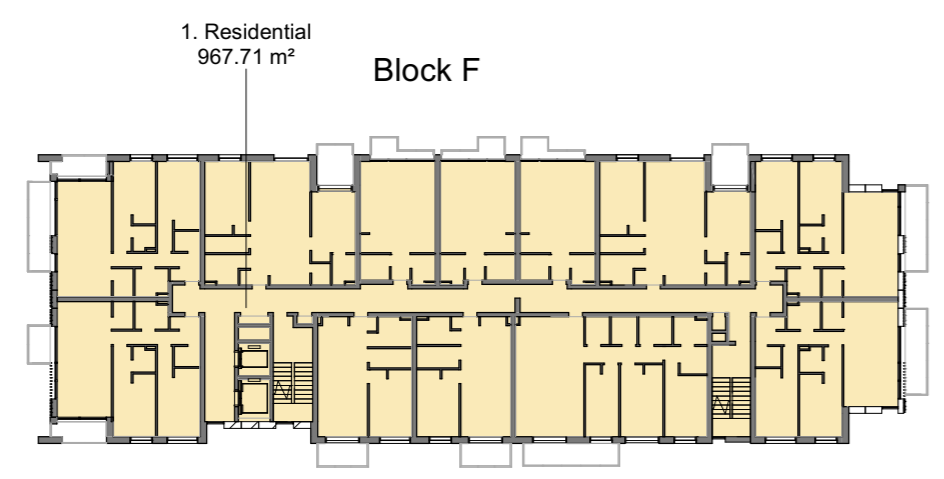
1 12 - TWELFTH FLOOR
1:500



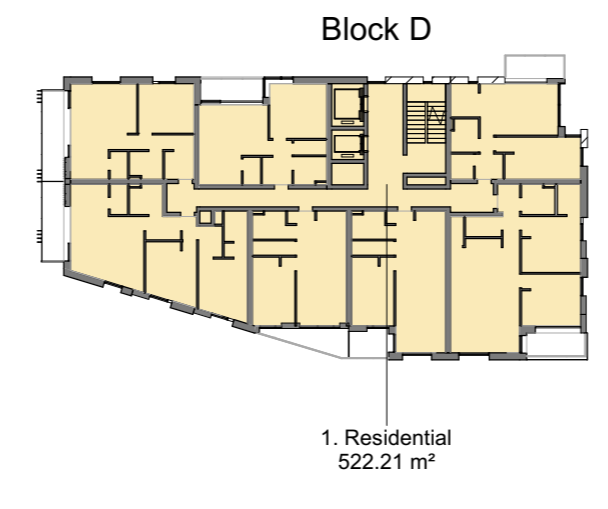
2 13 - THIRTEENTH FLOOR
1:500



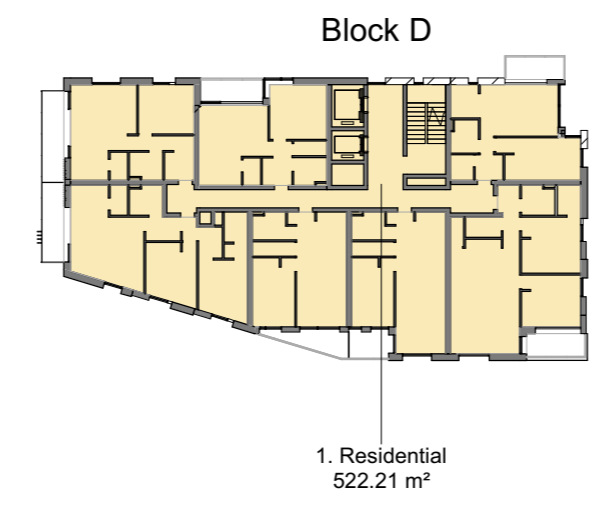
3 14 - FOURTEENTH FLOOR
1:500



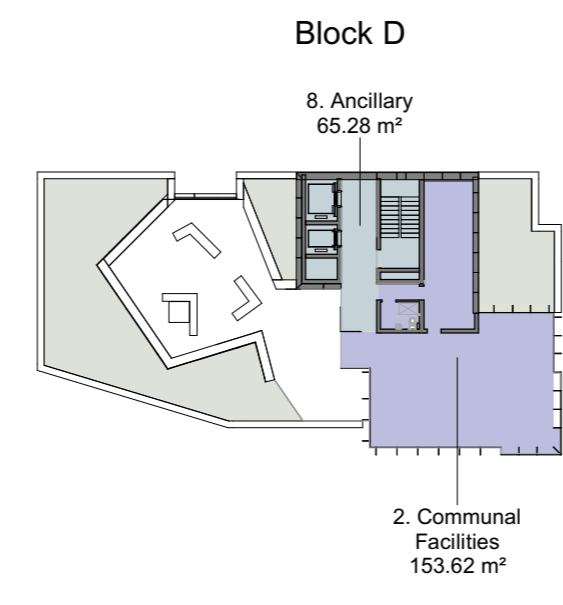
4 15 - FIFTEENTH FLOOR
1:500



5 16 - SIXTEENTH FLOOR
1:500



6 17 - SEVENTEENTH FLOOR
1:500



REV	DATE	DESCRIPTION	CKH	HJL	DRN
A1	15.11.2019	ISSUED FOR PLANNING APPROVAL	RJ	HJL	

ISSUED FOR INFORMATION

CLIENT
SANDYFORD GP Ltd.

PROJECT
SANDYFORD CENTRAL

PROPOSED SCHEDULE OF AREAS

PROJECT NUMBER	DATE	REVISION
950572	09/19/2019	
SCALE@ A1: 1 : 500	DRAWN/CHECKED: Author/Checker	
STATUS CODE:	DRAWING NUMBER	REVISION
A7	SFC-HJL-XX-ZZ-SC-A-1903	A1